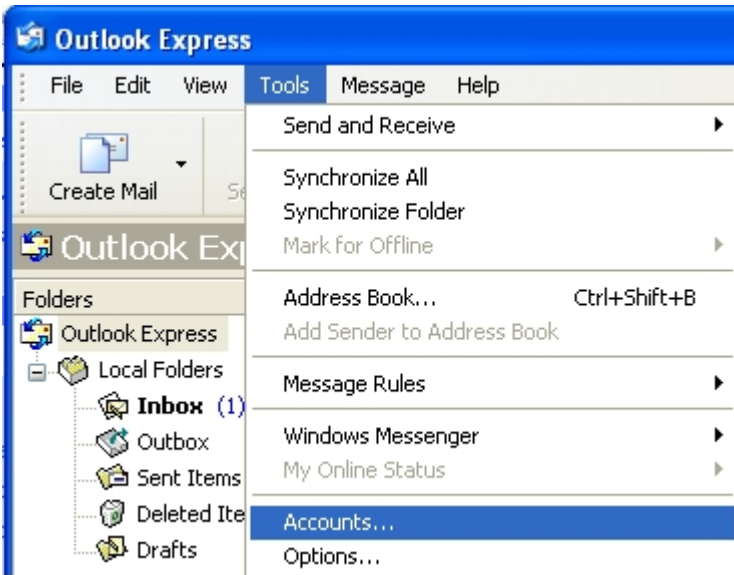


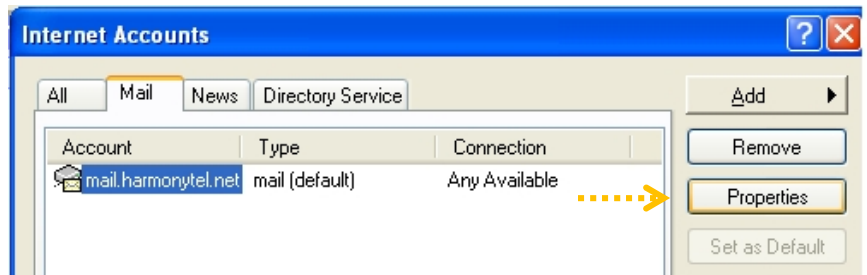
Outlook Express



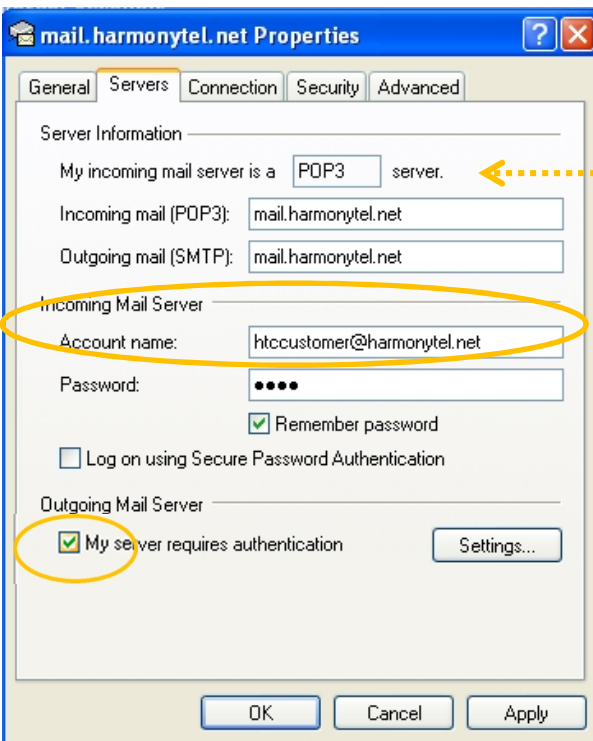
Open your Outlook email program.

Find & click the Tools tab at the top of the window.
Find Accounts in the drop down list.

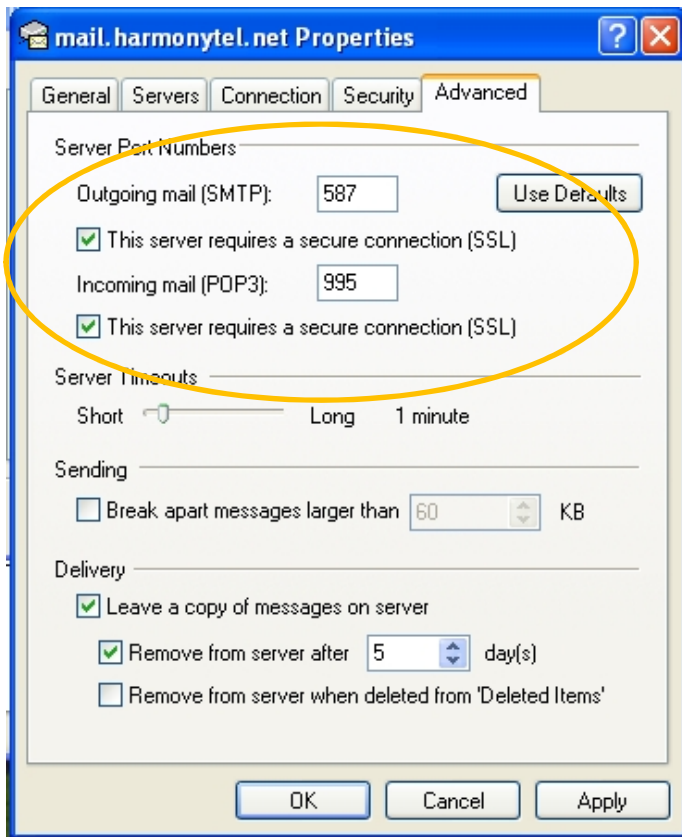
Highlight your email address and click Properties.



Here tells your if you are using an IMAP or POP3 server, if you would like to change what you are using you will need to delete and re-add your email.



Under Servers tab make sure Account Name is your **full email address** & check 'My server requires authentication.'



Under the Advanced tab change settings to match, including checking both servers require secure connection (SSL)